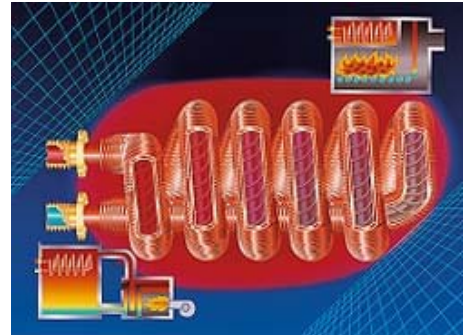


Heat Exchangers

Finned Tube Coils type SBW

Description

The SBW Finned Tube Instantaneous Water Heaters are produced from Trufin® W/HT tubes. Due to the special inside and outside structure of the tube a very high heat transfer is achieved. On account of the inside structure a slight increase of the pressure drop on the inside should be taken into consideration.



Application

SBW Finned Tube Instantaneous Water Heaters are used in heating boilers and storage tanks for heating Domestic water. Furthermore, they are used as a thermal safety device against overheating in solid fuel heating boilers.

Schmöle supplies SBWT Finned Tube Condensers to DIN 1988 part 4, i. e. without a soldering seam between the tube and shell side, as direct condensing coils for domestic water heat pumps.

In the case of special safety requirements the type BWT-S is available. Due to the use of a double-walled safety tube, with these finned tube condensers the specifications of standard DIN 4753 are fulfilled, if a corresponding leak detector is installed.

Medium	Water
Maximum flow rate (dependent on type)	3,600 l/h
Standard capacities (continuous rating)	24 - 73 kW*
Maximum operating pressure	16 bar
Maximum operating temperature	150 °C

*Basis:

Heating water temperature:	75 °C
Domestic water inlet temperature:	10 °C
Domestic water outlet temperature:	45 °C

Finned Tube Coils type SBW

Materials

Finned tube	Cu-DHP
Connection fitting	CuZn39Pb3

Approvals

Schmöle is in possession of a certified Quality Management System to DIN EN ISO 9001 and of an approval to Pressure Equipment Directive (PED) 97/23/EC.